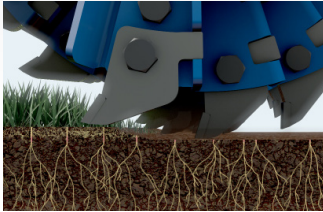


KORO

Campey
TURF CARE SYSTEMS
QUALITY GROUND CARE EQUIPMENT

OFFICIAL
KORO
DISTRIBUTOR
campeyturfcare.com



UNIVERSE® Rotor



Terraplane® Rotor

Specifically designed for all sports turf and golf course maintenance

Solid locking pins for consistency

Improved clean up due to new re-designed UNIVERSE® rotor and angled cross conveyor

Large diameter rollers for stability and super depth control



The original and best just got better

THE REMASTERED KORO® FTM® RANGE

The indisputable success of the Koro® FIELDTOPMAKER® across all sports surfaces has helped produce healthier turf through greatly improved surface hygiene, and the remastered 1.2m, 1.6m, 2.0m and 2.5m models build on that success.

Campey supply market leading, innovative turf care machinery worldwide, we're continually researching new techniques and refining existing practices to help turf care professionals achieve perfection.

Call +44 (0)1260 224568, email info@campeyturfcare.com or visit www.campeyturfcare.com

CampeyTurfCare CampeySportsTurfMachinery CampeyMachinery CampeyTurfCare

KORO

Campey
TURF CARE SYSTEMS
QUALITY GROUND CARE EQUIPMENT

OFFICIAL
KORO
DISTRIBUTOR
campeyturfcare.com



KORO® BY IMANTS

UNIVERSE® Rotor

Patent No. W02013/027005

Further research and testing on different sports turf and grasses, to see how long the recovery time was in different situations, led to the development of different thicknesses of UNIVERSE® blades. 5mm and 3mm blades were developed for KORO® UNIVERSE® Finesse mowing, which will deliver a more refined finish, the working depth of the rotors can be set with infinite precision.

All 3 blades can be used on natural turf, on both cool and warm season grasses for KORO® UNIVERSE® Finesse Mowing, or KORO® UNIVERSE® Fraze Mowing.

For Natural / Hybrid Surfaces

The UNIVERSE® rotor was initially developed for the removal of organic build up from the surface of semi-synthetic natural turf pitches that are now common in professional stadiums around the world.

The UNIVERSE® rotor (fitted with 10mm blades) achieves excellent surface hygiene without damaging the exposed synthetic/hybrid fibres. In one pass the whole annual renovation process to include dressing with 40/50 ton of sand, fertilising and overseeding can be carried out in one day instead of 4/5 days, with the process known as Koro UNIVERSE® Fraze Mowing.

UNIVERSE® Fraze Mowing on natural/hybrid surfaces allows the turf professional to maintain the original quality of the surface.



KORO

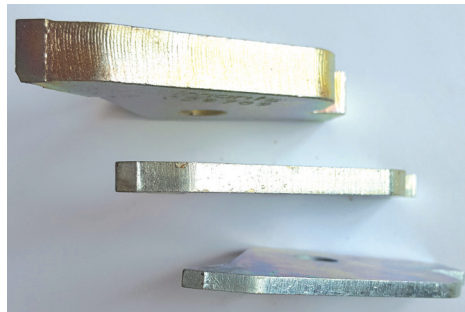
Campey
TURF CARE SYSTEMS
QUALITY GROUND CARE EQUIPMENT

OFFICIAL
KORO
DISTRIBUTOR
campeyturfcare.com

10mm tungsten tipped
blades in 4 spiral UNIVERSE®
rotor configuration



2012 / 2013 saw the introduction
of 2 new rotors for the KORO® FTM®;
UNIVERSE® and TERRAPLANE®.



The first blades designed for the
UNIVERSE® rotor where 10mm.



Percentage removed with different blades and configurations of the UNIVERSE® Rotor

10mm

- With the 10mm blades on 4 spiral you remove 100% of the surface
- With the 10mm blades on 2 spiral you remove 50% of the surface with 10mm gone 10mm still there

5mm

- With the 5mm blades on 4 spiral you remove 50% of the surface with 5mm and gone 5mm still there
- With the 5mm blades on 2 spiral you remove 25% of the surface with 5mm gone and 15mm still there

3mm

- With the 3mm blades on 4 spiral you remove 30% of the surface with 3mm gone and 7mm still there
- With the 3mm blades on 2 spiral you remove 15% of the surface with 3mm gone and 17mm still there



KORO® by Imants - FIELD TOP MAKER® model options

MODEL	1200	1600	2000	2500
Working width	1.20m	1.60m	2.00m	2.50m
Overall / transport width	1.60m	1.80m	2.55m	2.95m
Approx weight*	1,065kg	1,150kg	1,695kg	1,955kg
Working depth	0 to 50 mm			
Elevator discharge height	Approx 1.50m / 60"		Approx 2.0mm	
Recommended tractor	35 - 50hp	45 - 65hp	70 - 100hp	95 - 120hp
Tractor mounting	Cat I or II, 3-pt linkage		Cat II, 3pt linkage	
Tractor requirements	2 x double acting spool valves - 30L/min Creep speed gearbox or hydrostatic drive 540 PTO drive		2 x double acting spool valves - 40L/min	
Operating speed	0 – 2kph / 0 – 1.2mph for Digging and Terraplane® rotors 0 – 4kph / 0 – 2.4mph for UNIVERSE® rotor 0 – 6kph / 0 – 3.72mph for Scarifying rotor			

OPTIONAL ACCESSORIES

Mid-Mounted Roller	Optional	Optional	Optional	N/A
--------------------	----------	----------	----------	-----

OPTIONAL ROTORS

Digging Rotor	Available	Available	Available	Available
Number of Blades	40	52	64	80
Terraplane® Rotor	Available	Available	Available	Available
Number of blades	36	45	60	75
UNIVERSE® Rotor	Available	Available	Available	Available
Number of 10mm blades (on every holder)	121	161	202	252
Number of 5mm blades (on every holder) **	121	161	202	252
Number of 3mm blades (on every holder) **	121	161	202	252
Scarifying Rotor	Available	Available	Available	Available
3mm Tipped Blades	Optional	Optional	Optional	Optional
1.5mm Tipped Blades	Optional	Optional	Not recommended	Not recommended
Number of Blades	70	88	112	148
Blade spacing	34mm	34mm	34mm	34mm

*depending on rotor

** different configurations are available

KORO

Campey
TURF CARE SYSTEMS
QUALITY GROUND CARE EQUIPMENT

OFFICIAL
KORO
DISTRIBUTOR
campeyturfcare.com



*Depth setting is accurate to 0.5mm,
via a digital display read out*

KORO® BY IMANTS

Terraplane® Rotor

The Terraplane Rotor® now leads the way in accuracy of cut, blade durability and surface hygiene. Coupled with the KORO® FTM's infinitely fine, depth adjustment (accurate to 0.1mm), the Terraplane® Rotor will shave off the precise amount of organic material required, leaving a clean, smooth and even surface. The durability of the tungsten-faced blades prolongs the accuracy of cut, and reduces the down-time associated with changing blades. The unrivalled surface hygiene of the Terraplane® Rotor eliminates any clean-up pass and saves time, labour and fuel costs.

